





Knowledge Translation

John Young
j.young@odi.org.uk

Seminar Overview

- ODI/RAPID/Definitions
- The researcher's view
- The policy maker's view
- An analytical framework
- The policy context for community health nursing
- A practical framework
- Some useful tools
- Applicability to community health nursing
- Further information




Overseas Development Institute

- Development Think Tank
- £8m, 60 researchers
- Research / Advice / Public Debate
- Rural / Humanitarian / Poverty & Aid / Economics / Policy Processes
- DFID, Parliament, WB, EC
- Civil Society

For more information see: www.odi.org.uk





RAPID Programme

- Research
 - Literature
 - GDN Case Studies
 - ODI Case Studies
- Advisory work
 - Projects
 - Organisations
- Workshops and Seminars
- Think Tank Programme




for further information see: www.odi.org.uk/rapid

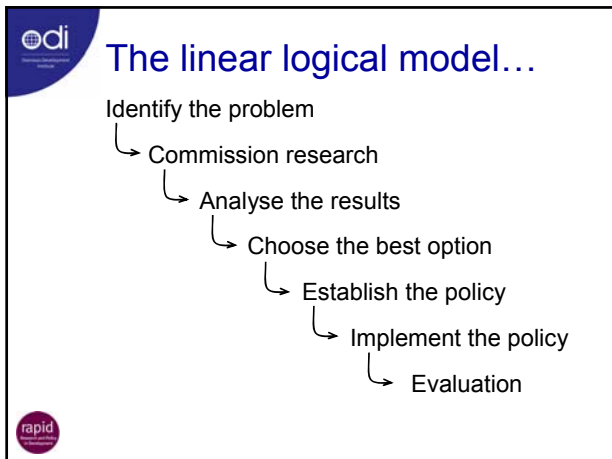



Definitions

- **Research:** *“any systematic effort to increase the stock of knowledge”*
- **Policy:** *“a purposive course of action followed by an actor or set of actors”*
- **Evidence:** *“the available information supporting or otherwise a belief or proposition”*
- **Evidence-based Policy:** *“public policy informed by rigorously established evidence”.*



The researcher's view...



...in reality...

- “The whole life of policy is a chaos of purposes and accidents. It is not at all a matter of the rational implementation of the so-called decisions through selected strategies”¹
- “Most policy research on African agriculture is irrelevant to agricultural and overall economic policy in Africa”²
- “Research is more often regarded as the opposite of action rather than a response to ignorance”³

¹ Clay & Schaffer (1984), Room for Manoeuvre: An Exploration of Public Policy in Agricultural and Rural Development, Heineman Educational Books, London
² Omamo (2003), Policy Research on African Agriculture: Trends, Gaps, and Challenges, International Service for National Agricultural Research (ISNAR) Research Report No 21
³ Surr (2003), DFID Research Review

- Existing theory**
- ~~X Linear model~~
 - 2. Percolation model, Weiss
 - 3. Tipping point model, Gladwell
 - 4. 'Context, evidence, links' framework, ODI
 - 5. Policy narratives, Roe
 - 6. Systems model (NSI)
 - 7. External forces, Lindquist
 - 8. 'Room for manoeuvre', Clay & Schaffer
 - 9. 'Street level bureaucrats', Lipsky
 - 10. Policy as social experiments, Rondonelli
 - 11. Policy Streams & Windows, Kingdon
 - 12. Disjointed incrementalism, Lindquist
 - 13. The 'tipping point', Gladwell
 - 14. Crisis model, Kuhn
 - 15. 'Framework of possible thought', Chomsky
 - 16. Variables for Credibility, Beach
 - 17. The source is as important as content, Gladwell
 - 18. Linear model of communication, Shannon
 - 19. Interactive model,
 - 20. Simple and surprising stories, Communication Theory
 - 21. Provide solutions, Marketing I
 - 22. Find the right packaging, Marketing II
 - 23. Elicit a response, Kottler
 - 24. Translation of technology, Volkow
 - 25. Epistemic communities
 - 26. Policy communities
 - 27. Advocacy coalitions etc, Pross
 - 28. Negotiation through networks, Sebatier
 - 29. Shadow networks, Klickert
 - 30. Chains of accountability, Fine
 - 31. Communication for social change, Rockefeller
 - 32. Wheels and webs, Chapman & Fisher

- Existing theory – a short list**
- Policy narratives, Roe
 - Systems of Innovation
 - 'Room for manoeuvre'
 - 'Street level bureaucrats'
 - Policy as social experiment
 - Policy streams and windows, Kingdon
 - Disjointed Incrementalism
 - Social Epidemics, Gladwell
 - The RAPID Framework
-

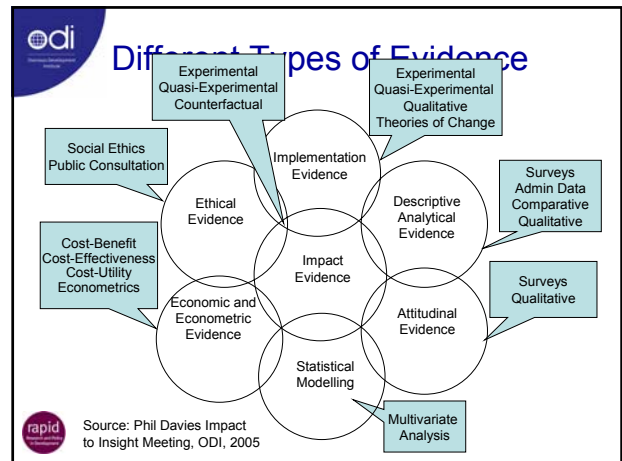
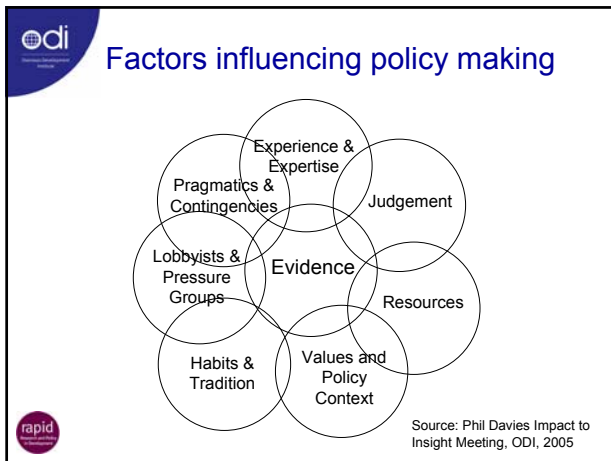
The policymaker's view...

Policy makers are...

...almost pathologically unable to use research-based evidence because of ...

- Speed
- Superficiality
- Spin
- Secrecy
- Scientific Ignorance

Vincent Cable – Lib. Democrat MP & Shadow Minister of Finance
 More at: www.odi.org.uk/RAPID/Meetings/Evidence

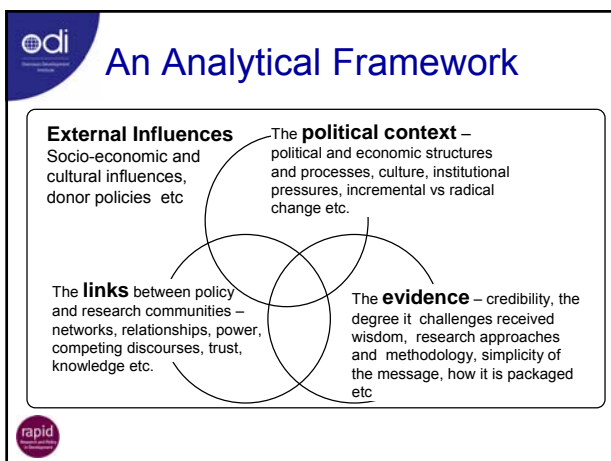


Different Notions of Evidence

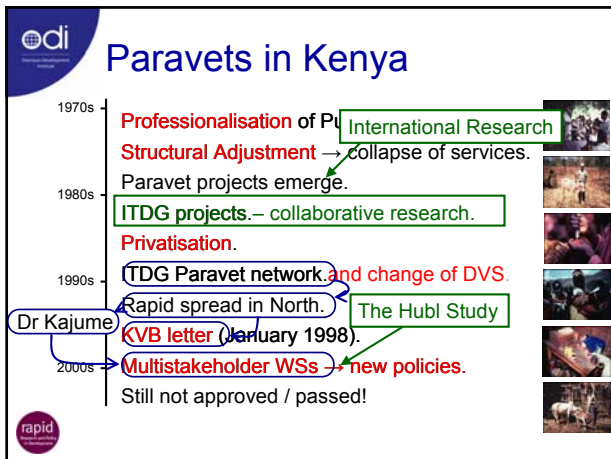
Researchers' Evidence	Policy Makers' Evidence
<ul style="list-style-type: none"> • 'Scientific' (Context free) • Proven empirically • Theoretically driven • As long as it takes • Caveats and qualifications 	<ul style="list-style-type: none"> • Colloquial (Contextual) • Anything that seems reasonable • Policy relevant • Timely • Clear Message

Source: Phil Davies Impact to Insight Meeting, ODI, 2005

An analytical framework



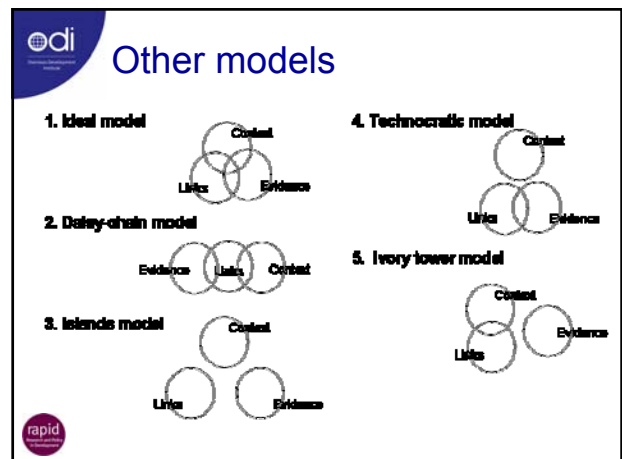
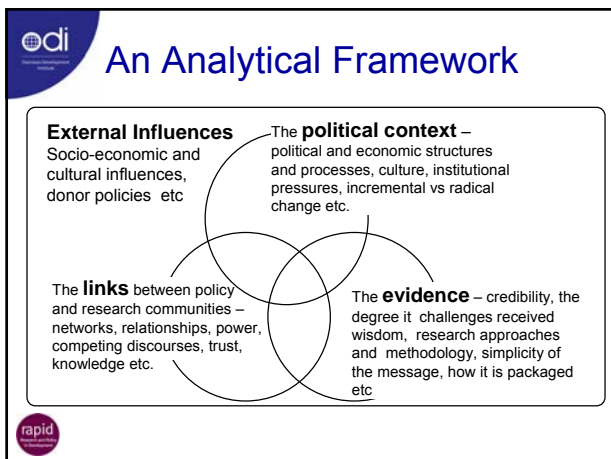
- ### Case Studies
- **Sustainable Livelihoods:** The Evolution of DFID Policy
 - The **PRSP Initiative:** Research in Multilateral Policy Change
 - The adoption of **Ethical Principles in Humanitarian Aid** post Rwanda
 - **Animal Health Care in Kenya:** Evidence fails to influence Policy
 - **50 GDN Case Studies:** Examples where evidence has or hasn't influenced policy
-

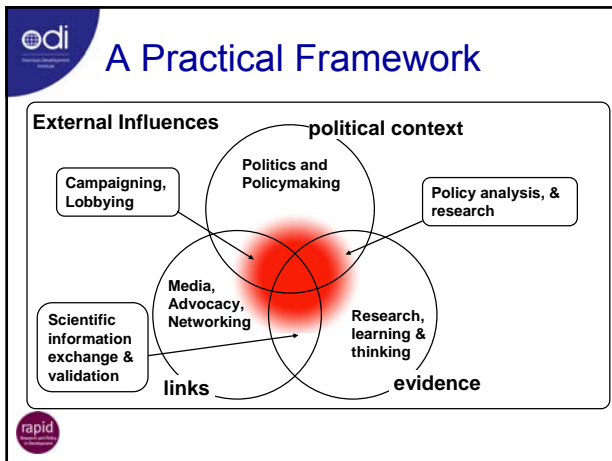


Scoping the context for community nursing

- ## The Key Questions
- The external environment:**
- Who are the key actors?
 - What is their agenda?
 - How do they influence the political context?
- The political context:**
- Is there political interest in change?
 - Is there room for manoeuvre?
 - How do they perceive the problem?
- The evidence:**
- Is it there?
 - Is it relevant?
 - Is it practically useful?
 - Are the concepts new?
 - Does it need re-packaging?
- Links:**
- Who are the key actors?
 - Are there existing networks?
 - How best to transfer the information?
 - The media?
 - Campaigns?

A practical framework

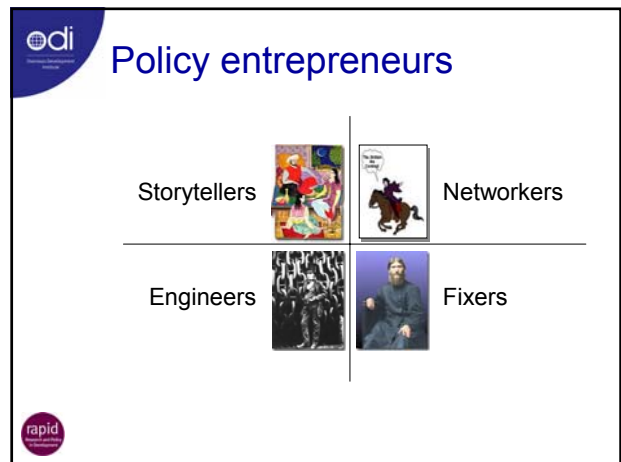




- ## What you need to know
- **The external environment:** Who are the key actors? What is their agenda? How do they influence the political context?
 - **The political context:** Is there political interest in change? Is there room for manoeuvre? How do they perceive the problem?
 - **The evidence:** Is it there? Is it relevant? Is it practically useful? Are the concepts familiar or new? Does it need re-packaging?
 - **Links:** Who are the key individuals? Are there existing networks to use? How best to transfer the information? The media? Campaigns?

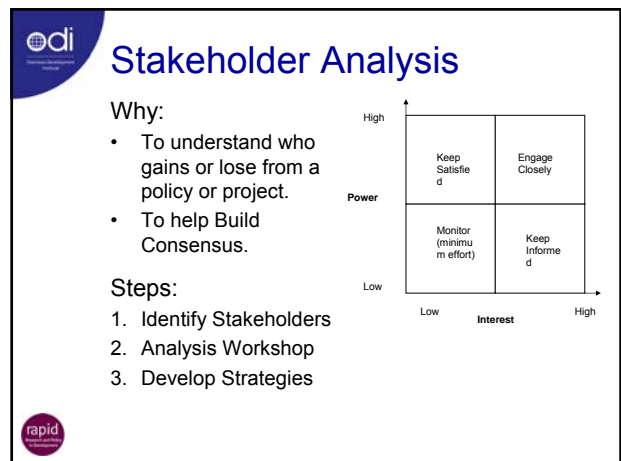
What researchers need to do

What researchers need to know	What researchers need to do	How to do it
Political Context: <ul style="list-style-type: none"> Who are the policymakers? Is there demand for ideas? What is the policy process? 	<ul style="list-style-type: none"> Get to know the policymakers. Identify friends and foes. Prepare for policy opportunities. Look out for policy windows. 	<ul style="list-style-type: none"> Work with them – seek commissions Strategic opportunism – prepare for known events + resources for others
Evidence <ul style="list-style-type: none"> What is the current theory? What are the narratives? How divergent is it? 	<ul style="list-style-type: none"> Establish credibility Provide practical solutions Establish legitimacy. Present clear options Use familiar narratives. 	<ul style="list-style-type: none"> Build a reputation Action-research Pilot projects to generate legitimacy Good communication
Links <ul style="list-style-type: none"> Who are the stakeholders? What networks exist? Who are the connectors, mavens and salesmen? 	<ul style="list-style-type: none"> Get to know the others Work through existing networks. Build coalitions. Build new policy networks. 	<ul style="list-style-type: none"> Build partnerships. Identify key networkers, mavens and salesmen. Use informal contacts



Practical Tools

- Overarching Tools**
 - The RAPID Framework
 - Using the Framework
 - The Entrepreneurship Questionnaire
- Communication Tools**
 - Communications Strategy
 - SWOT analysis
 - Message Design
 - Making use of the media
- Policy Influence Tools**
 - Influence Mapping & Power Map
 - Lobbying and Advocacy
 - Campaigning: A Simple Guide
 - Competency self-assessment



edi

Policy Process Mapping

- General domestic and international context.
- Specific Policy Issues (i.e. the policy cycle)
- Who are the Stakeholders? (Stakeholder analysis)
 - Arena: government, parliament, civil society, judiciary, private sector.
 - Level: local, national, international
- What is their Interest and Influence?
- Process matrix + political matrix
- Political and administrative feasibility assessment

rapid

[Sources: M. Grindle / J. Court]

edi

SWOT Analysis

- What type of policy influencing skills and capacities do we have?
- In what areas have our staff used them more effectively?
- Who are our strongest allies?
- When have they worked with us?
- Are there any windows of opportunity?
- What can affect our ability to influence policy?

Strengths	Weaknesses
Skills and abilities Funding lines Commitment to positions Contacts and Partners Existing activities	
Opportunities	Threats
Other orgs relevant to the issue Resources: financial, technical, human Political and policy space Other groups or forces	

rapid

edi

Groundwater in India

- to maximise impact of DFID forest/ground water research project in India
- Researchers, policy makers and activists
- Used framework to analyse factors in water sector in India
- Developed strategy for final phase:
 - Less research
 - More communication
 - Developing champions in regional and national government
 - Local, Regional & National advocacy campaign



rapid

edi

SMEPOL Project Egypt

- An IDRC project to improve small and medium scale enterprise policy in Egypt
- Policy analysts & researchers
- Used a range of tools:
 - Policy Process Mapping
 - RAPID Framework
 - Stakeholder Analysis
 - Force-Field Analysis
 - SWOT
- To develop action plans for more evidence-based policy development



rapid

edi

DFID Policy Processes

- To explore how policies formed and promoted in DFID.
- Small, informal workshop:
 - 7 staff
 - Identified 8 recent policy initiatives
 - pair-wise ranking of success factors.
- Key factors in DFID:
 - Intellectual coherence & “evidence”
 - Congruence with White Papers
 - High-level support
 - Follow-up



rapid

Exercise:

- Stakeholder Analysis
- Policy Mapping
- Forcefield Analysis



Further Information

- ODI Working Papers
- Bridging Research and Policy Book
- Meeting series Monograph
- Tools for Policy Impact
- RAPID Briefing Paper
- RAPID CDROM
- www.odi.org.uk/rapid

