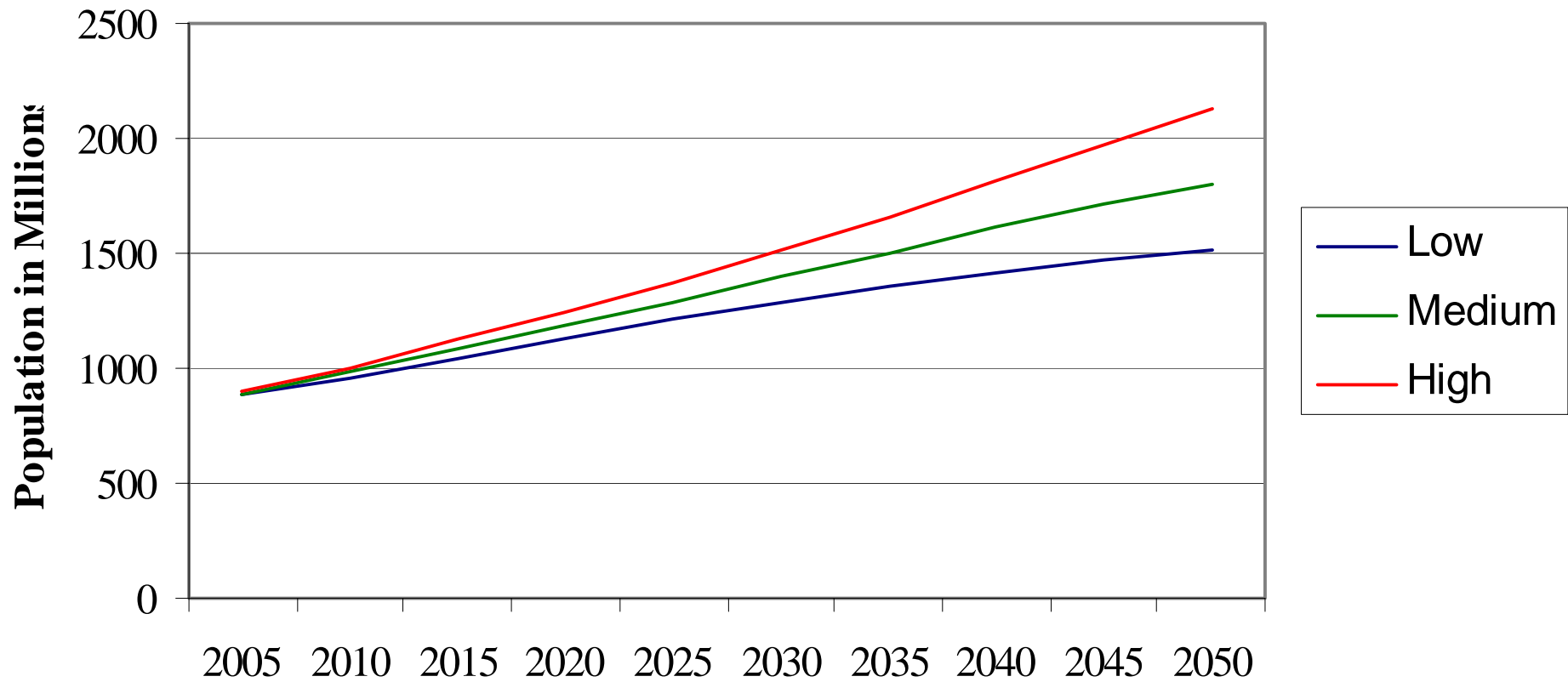


Figure 1. Population projections for Africa



Source: UN Population Prospects 2002

Past & Projected Fertility Rates for Regions of Sub-Saharan Africa

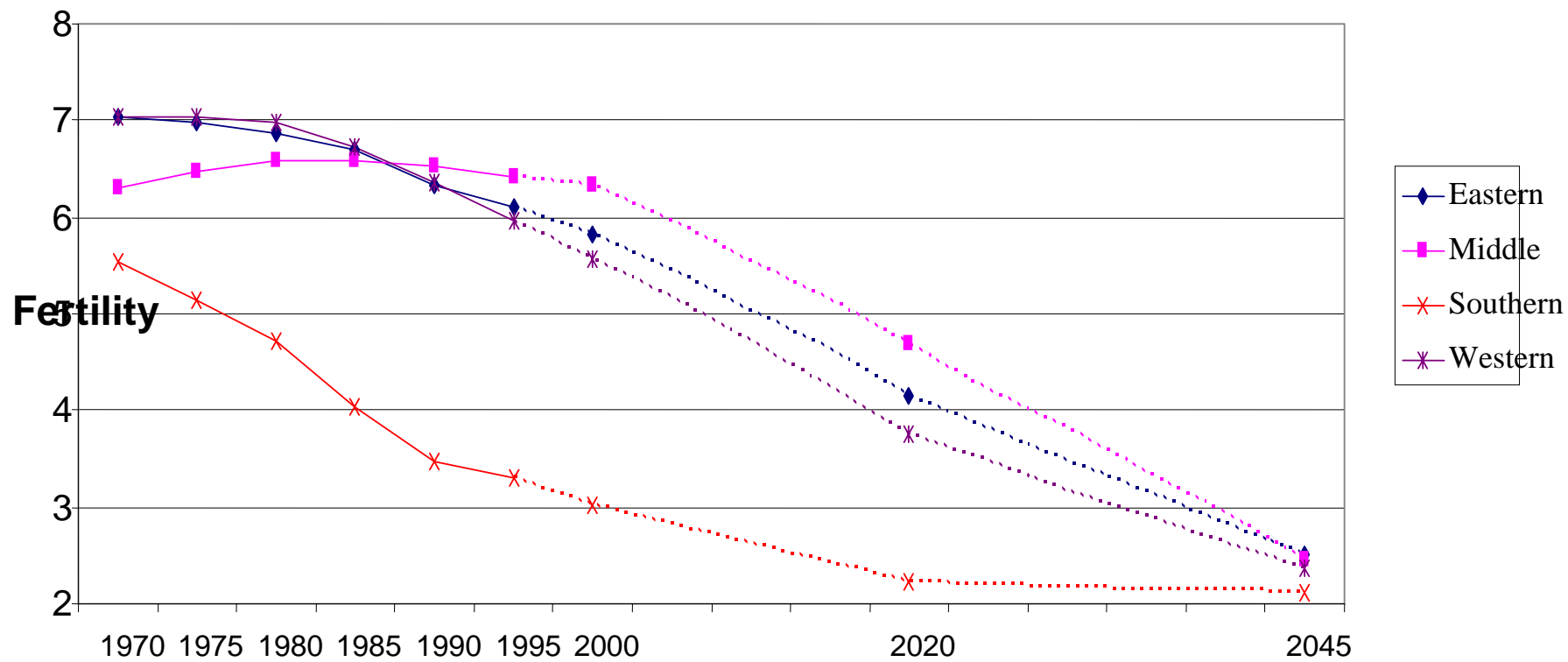


Table A - Part 1
Percentage of Currently Married Women Using A Modern Method of
Contraception: Sub-Saharan Africa, 1975-1995

	PERIOD						Policy to Reduce Fertility
	1975-79	1980-84	1985-89	1990-94	1995-99	2000+	
East & Southern							
Botswana		19	32				✓
Burundi			1				✓
Eritrea						4	-
Ethiopia			4			6	✓
Kenya	3	9	18	27	32	33	✓
Madagascar				5	10		✓
Malawi			1	7		26	✓
Mozambique					5		✓
Namibia				26		44	✓
Rwanda		1		13		6	✓
Swaziland			21				✓
South Africa	35		48		55		✓
Tanzania				7	17		✓
Uganda			2		8	18	✓
Zambia				9	14		✓
Zimbabwe		27	36	42	50		✓

Table A - Part 2

	PERIOD						Policy to Reduce Fertility
	1975-79	1980-84	1985-89	1990-94	1995-99	2000+	
West & Central							
Benin		1			3	7	-
Burkina Faso				4	5		✓
Cameroon	1			4	7		✓
Central African Rep.				3			✓
Chad					1		-
Côte D'Ivoire		1		4	7		-
Gabon						13	-
Ghana	6		4	10	13		✓
Guinea				5	4		✓
Liberia			6				✓
Mali			1		5	7	✓
Mauritania		0				5	-
Niger				2	5		✓
Nigeria		1		4	9		✓
Senegal	1		2	5	8		✓
Togo			3		7		-

Source: WFS, DHS and similar surveys

Table B - Part 1

Mean desired family sizes among all women (African surveys)

	PERIOD					
	1975-79	1980-84	1985-89	1990-94	1995-99	2000+
East & Southern						
Botswana			4.7			
Burundi			5.3			
Eritrea					6.0	
Ethiopia						5.3
Kenya	7.2		4.4	3.7	3.8	3.9
Madagascar				5.5	5.3	
Malawi		6.0		5.1		5.0
Mozambique					5.9	
Namibia				5.0		
Rwanda		6.3		4.2		4.9
South Africa			3.6		2.9	
Tanzania				6.1	5.3	
Uganda			6.5	5.6	5.3	4.8
Zambia				5.8	5.3	4.7
Zimbabwe			4.9	4.3	3.9	

Table B - Part 2

	PERIOD					
	1975-79	1980-84	1985-89	1990-94	1995-99	2000+
West & Central						
Benin	7.4				5.5	4.9
Burkina Faso				5.7	5.7	
Cameroon	8.1			6.8	6.0	
Central African Rep.				6.4		
Chad					8.3	
Côte D'Ivoire	8.4			5.5		
Ghana	6.0		5.3	4.4	4.3	
Guinea					5.7	
Liberia			6.0			
Mali			6.9		6.6	6.2
Mauritania						6.2
Niger				8.2	8.2	
Nigeria		8.3		5.8	6.1	
Senegal	8.3		6.8	5.9	5.3	
Togo			5.3		4.5	

Source: WFS, DHS and similar surveys

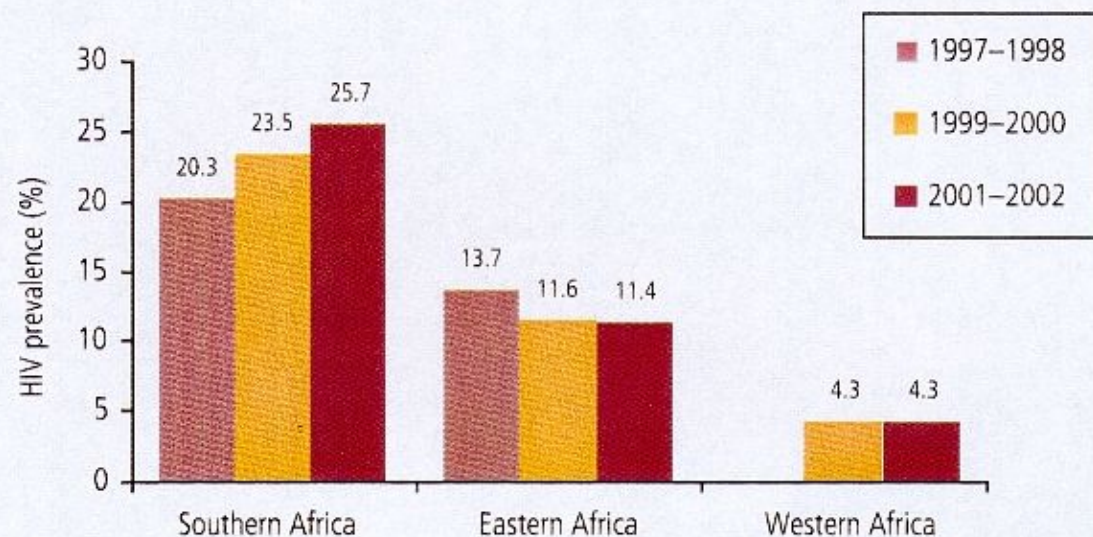
Table C

Desired family size among currently married men and women

	Men	Women
Kenya (1993)	4.1	3.9
Rwanda	4.3	4.4
Tanzania	7.4	6.4
Burundi	5.5	5.5
Malawi	5.4	5.3
Ghana (1993)	5.3	4.7
Cameroon	11.2	7.3
Niger	12.6	8.5
Guinea	7.9	6.2
Senegal	10.4	6.3
Burkina Faso	7.8	5.9

Source: Ezeh *et al* (1996) DHS Comparative Study No. 18

Trends in country median HIV prevalence among women attending antenatal care clinics in three sub-regions, data from the same clinics, 1997-2002



Data from antenatal care clinics in capital (or largest) cities are available for the longest periods of time. Figure 12 presents the trend in HIV prevalence in cities by sub-region for six two-year periods since the early 1990s.

Source: UNAIDS